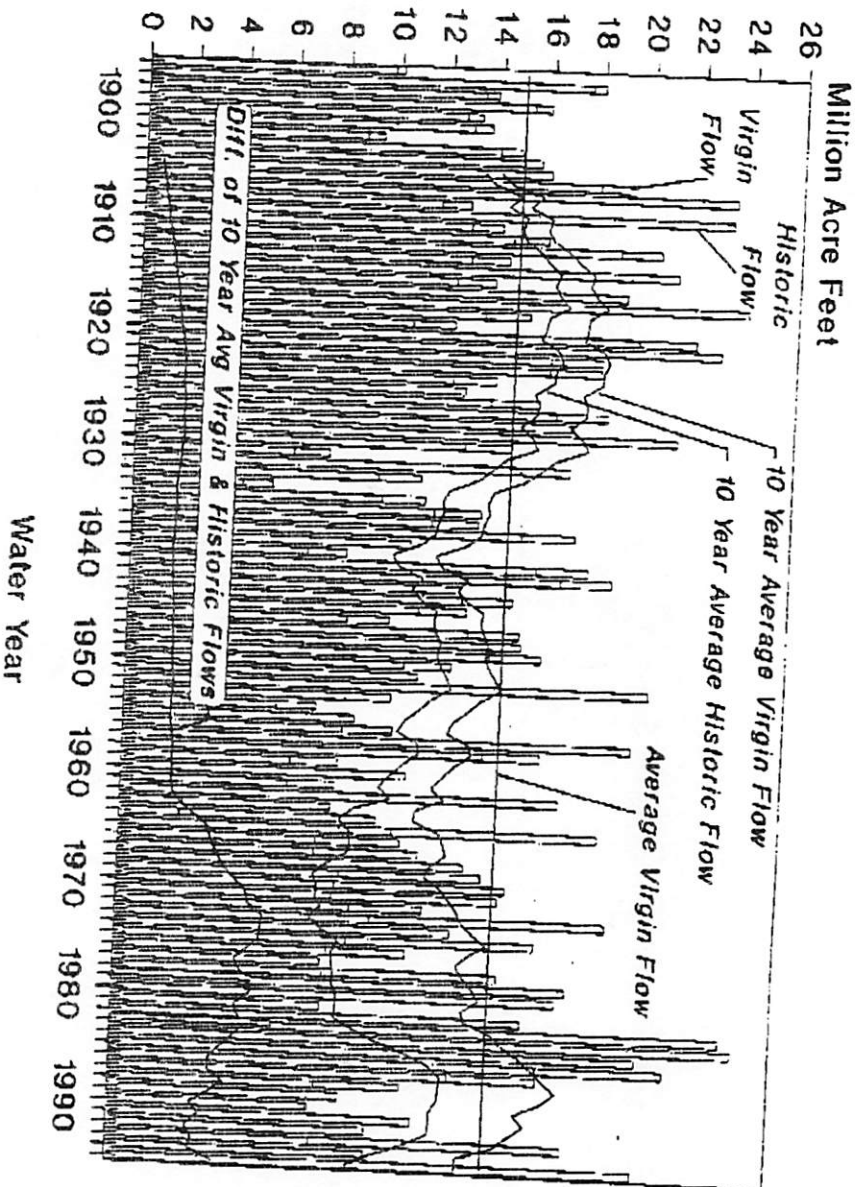
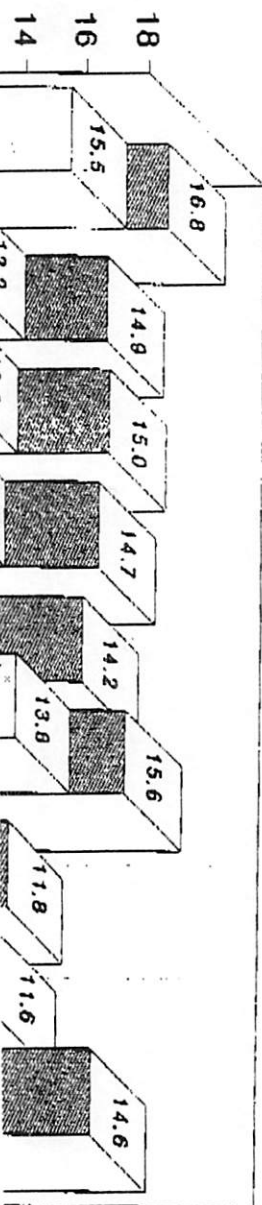


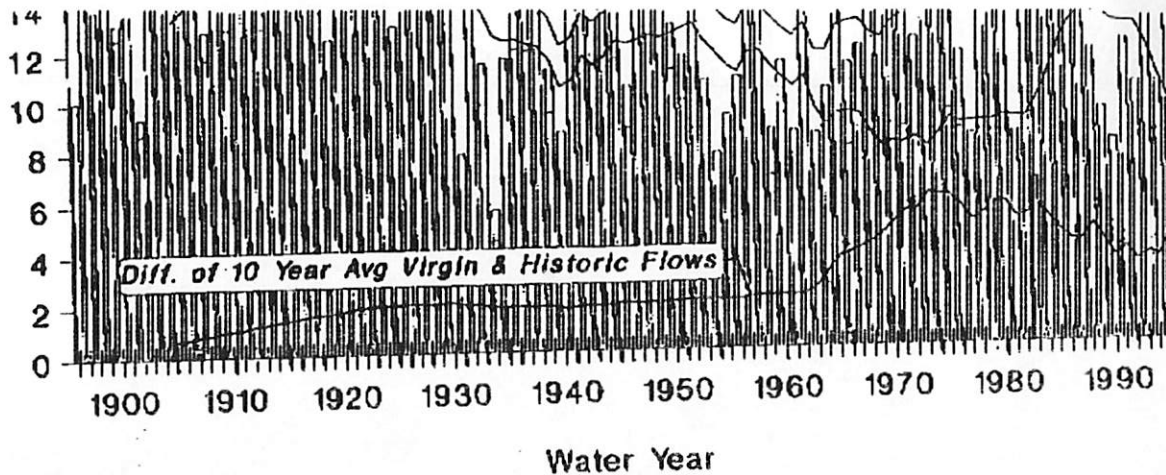
# Colorado River Flow At Lee Ferry, Arizona



## Lee Ferry Average Annual Flow For Selected Periods

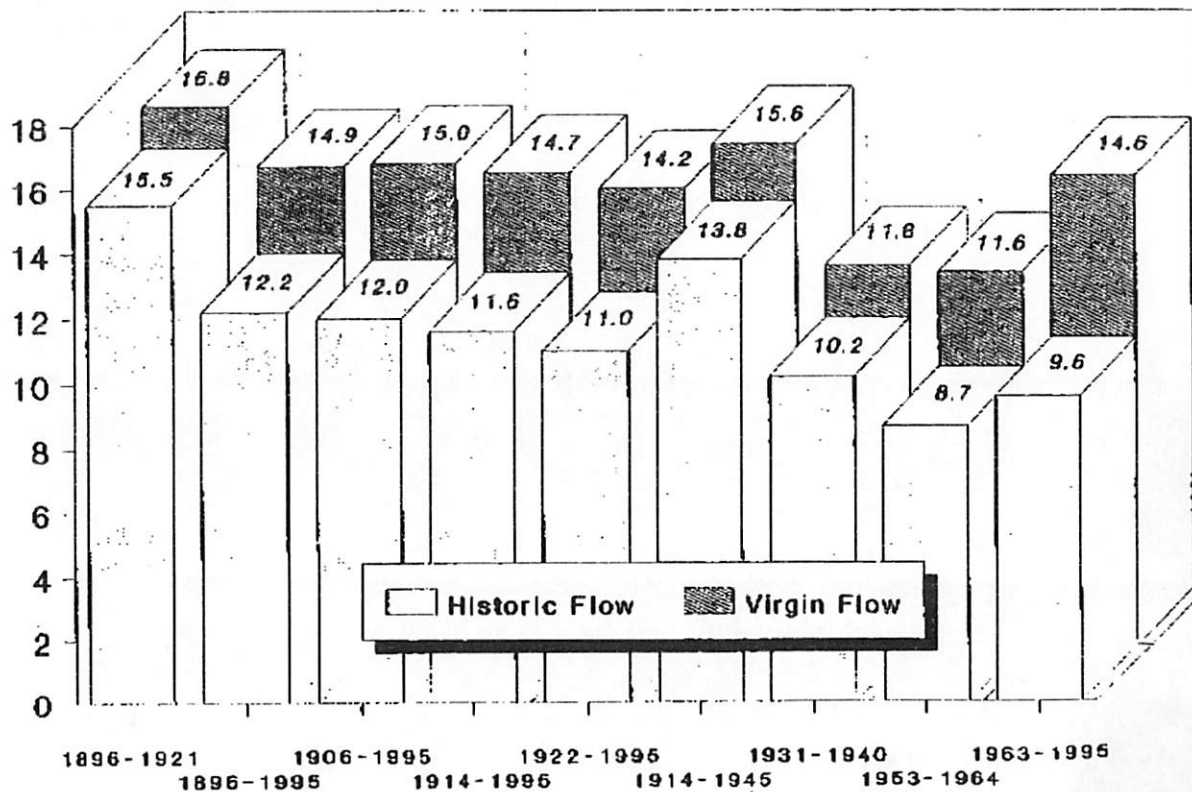
Million Acre-Feet



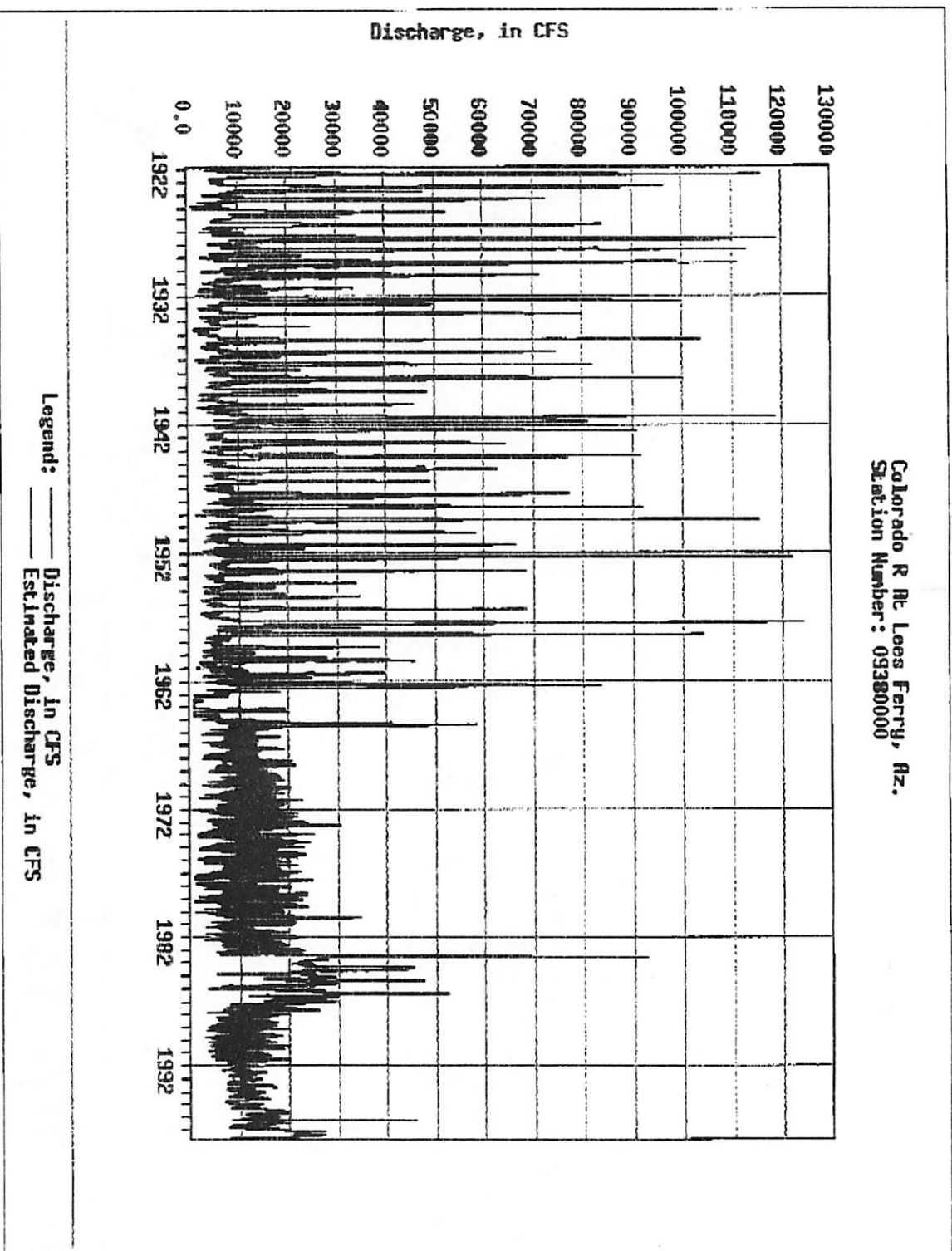


### Lee Ferry Average Annual Flow For Selected Periods

Million Acre-Feet



Colorado R. R. Lees Ferry, Ar.  
Station Number: 09380000

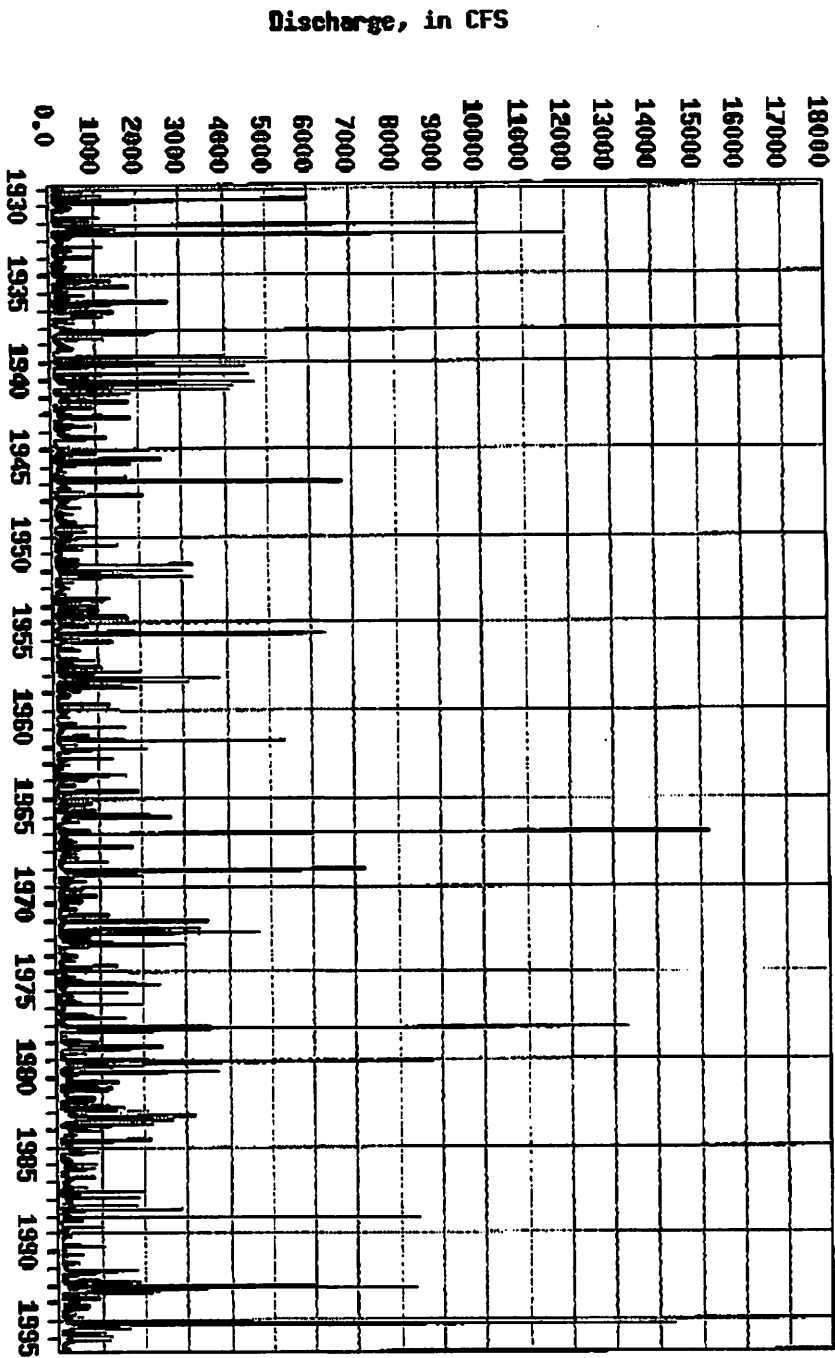


Some stations have red data points. These represent days for which data were estimated, rather than recorded.

[Force this graph to be redrawn](#)

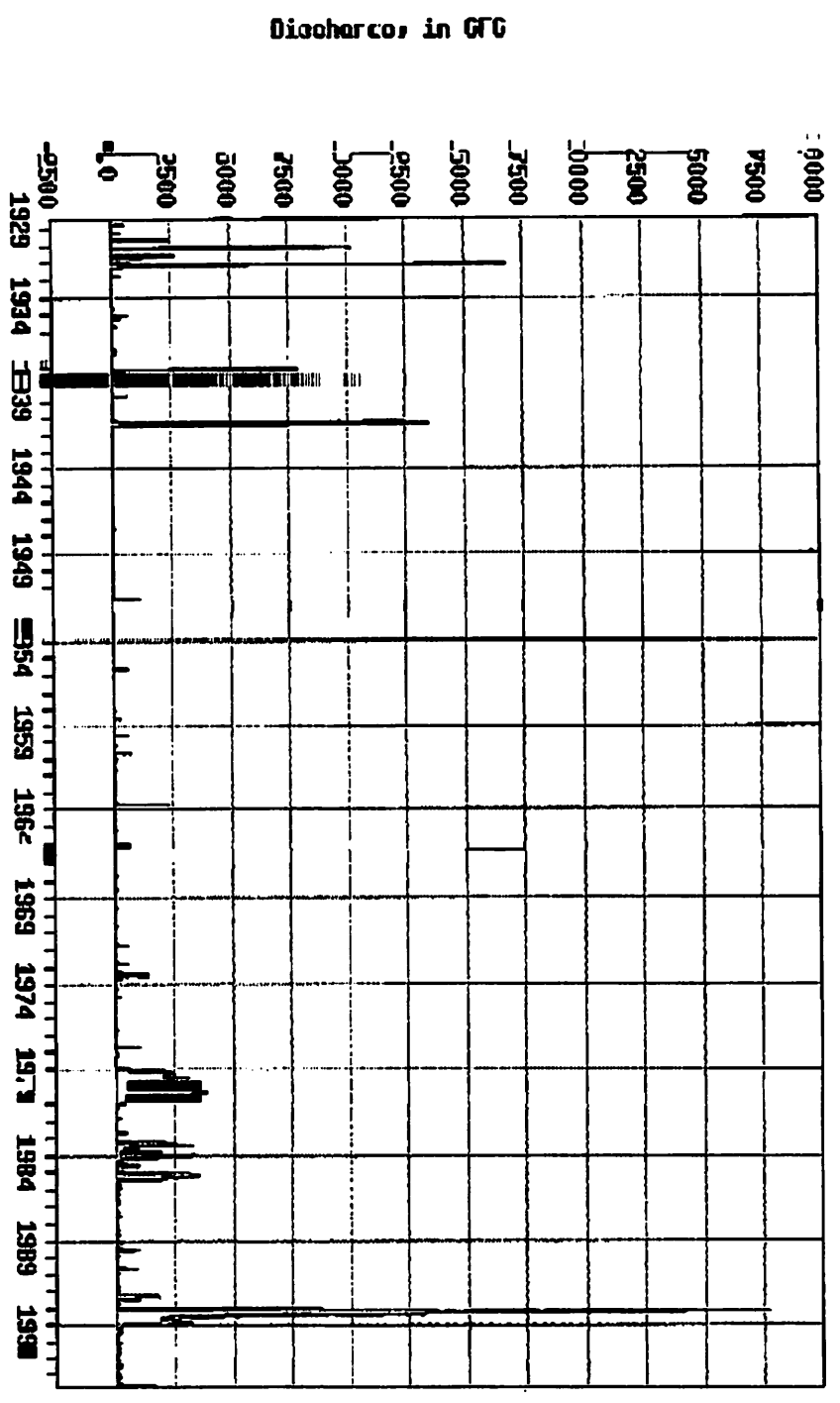
[Why you might press this button](#)

Virgin R Rte Littlefield, Az  
Station Number: 09415000



Legend: — Discharge, in CFS  
- - - Estimated Discharge, in CFS

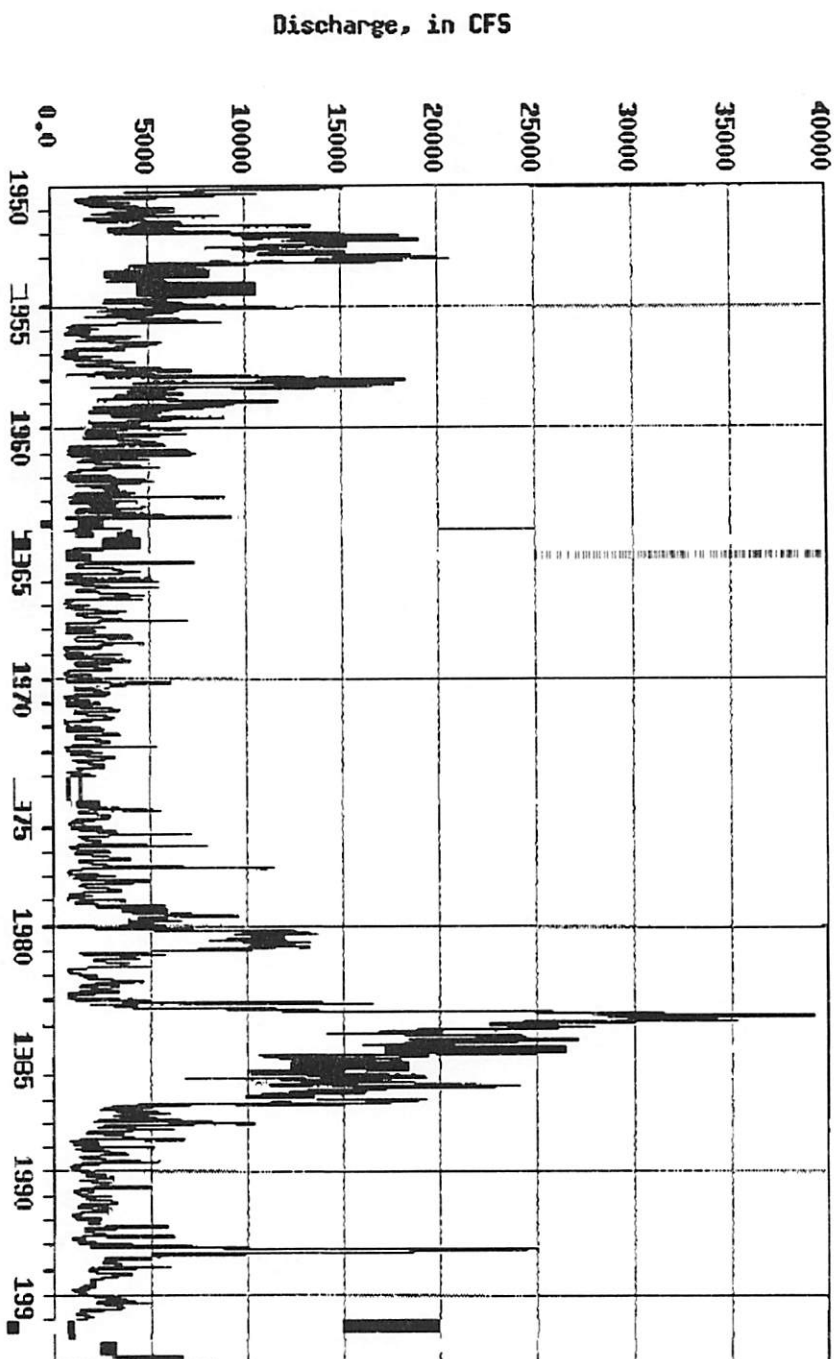
San River Near U.S. Station Number: 09520500



Legend:

- Discharge, in CFS
- - - Estimated Discharge, in CFS

Colorado R At Nib RB MareJ Dan Nr Andrade, Ca,  
Station Number: 09522000



Legend :

- Discharge - in CFS
- Estimate Discharge, in CFS



Table 3  
ESTIMATED VIRGIN FLOW AT LEE PERRY  
(Million ccf/year)

(1)	(2)	(3)	(4)	(5)	(6)	(7)
Years to Ending Sept 30 1995	Year Estimated Virgin Flow	Average to 1995	Average Since 1988	Progressive 10-Year Moving Average	Virgin Flow Minus 100-Year Average	
100	1888	10.1	14.9	10.1	0.0	
99	97	18.0	14.8	14.1	0.0	
98	98	13.8	14.8	14.0	0.0	
97	99	13.8	14.9	14.5	0.0	
96	1800	13.2	14.8	14.5	0.0	
95	01	18.6	14.8	14.2	0.0	
94	02	8.4	14.9	14.1	0.0	
93	03	14.8	15.0	13.4	0.0	
92	04	15.8	15.0	13.8	0.0	
91	05	18.0	15.0	13.8	0.0	
90	06	18.1	15.0	14.0	0.0	
89	07	23.4	15.0	14.5	0.2	
88	08	12.9	14.9	15.1	0.5	
87	09	20.3	14.9	15.7	0.5	
86	10	14.2	14.9	15.4	0.2	
85	11	16.0	14.8	15.8	0.4	
84	12	20.5	14.8	16.2	0.7	
83	13	14.5	14.8	16.5	0.7	
82	14	21.2	14.7	15.9	1.1	
81	15	14.0	14.7	16.1	0.4	
80	16	19.2	14.6	16.0	1.3	
79	17	24.0	14.6	16.1	1.8	
78	18	16.4	14.5	16.0	1.1	
77	19	12.5	14.4	16.4	0.5	
76	20	22.0	14.5	16.5	0.5	
75	21	20.0	14.4	16.5	-2.4	
74	22	18.9	14.2	16.8	7.1	
73	23	18.3	14.2	16.8	10.6	
72	24	14.2	14.2	16.9	8.1	
71	25	13.0	14.1	16.9	3.4	
70	26	15.8	14.1	16.8	1.8	
69	27	18.6	14.1	16.7	0.7	
68	28	17.3	14.1	16.7	1.0	
67	29	21.4	14.0	16.7	3.7	
66	30	14.8	13.9	16.8	1.8	
65	31	7.8	13.9	17.5	6.5	
64	32	17.2	14.0	18.0	8.5	
63	33	11.4	13.8	18.6	0.0	
62	34	5.8	14.0	18.4	2.5	
61	35	11.8	14.1	18.1	-0.5	
60	36	13.8	14.1	18.0	-8.3	
59	37	13.7	14.2	18.0	-0.5	
58	38	17.5	14.2	18.0	-1.1	
57	39	11.1	14.2	18.0	-1.2	
56	40	8.6	14.2	18.0	2.8	
55	41	18.1	14.2	18.0	-3.8	
54	42	10.1	14.2	18.0	-0.3	
53	43	18.1	14.2	18.0	1.29	
52	44	18.2	14.1	18.0	1.29	
51	45	13.4	14.1	18.0	4.2	
50	46	10.4	14.1	18.0	10.1	
49	47	15.5	14.2	18.0	13.2	
48	48	18.8	14.2	18.0	14.2	
	49		14.2	18.0	15.7	
	50		15.6	18.0	16.2	
	51		16.8	18.0	16.2	
	52		18.8	18.0	16.2	
	53		19.8	18.0	16.2	
	54		20.8	18.0	16.2	
	55		21.8	18.0	16.2	
	56		22.8	18.0	16.2	
	57		23.8	18.0	16.2	
	58		24.8	18.0	16.2	
	59		25.8	18.0	16.2	
	60		26.8	18.0	16.2	
	61		27.8	18.0	16.2	
	62		28.8	18.0	16.2	
	63		29.8	18.0	16.2	
	64		30.8	18.0	16.2	
	65		31.8	18.0	16.2	
	66		32.8	18.0	16.2	
	67		33.8	18.0	16.2	
	68		34.8	18.0	16.2	
	69		35.8	18.0	16.2	
	70		36.8	18.0	16.2	
	71		37.8	18.0	16.2	
	72		38.8	18.0	16.2	
	73		39.8	18.0	16.2	
	74		40.8	18.0	16.2	
	75		41.8	18.0	16.2	
	76		42.8	18.0	16.2	
	77		43.8	18.0	16.2	
	78		44.8	18.0	16.2	
	79		45.8	18.0	16.2	
	80		46.8	18.0	16.2	
	81		47.8	18.0	16.2	
	82		48.8	18.0	16.2	
	83		49.8	18.0	16.2	
	84		50.8	18.0	16.2	
	85		51.8	18.0	16.2	
	86		52.8	18.0	16.2	
	87		53.8	18.0	16.2	
	88		54.8	18.0	16.2	
	89		55.8	18.0	16.2	
	90		56.8	18.0	16.2	
	91		57.8	18.0	16.2	
	92		58.8	18.0	16.2	
	93		59.8	18.0	16.2	
	94		60.8	18.0	16.2	
	95		61.8	18.0	16.2	

Table 4  
ESTIMATED VIRGIN FLOW AT LEE PERRY  
(Million ccf/year)

(1)	(2)	(3)	(4)
Years to Ending Sept 30 1995	Year Estimated Virgin Flow	Average to 1995	Virgin Flow Minus 100-Year Average
47	48	18.4	0.0
46	49	18.8	0.0
45	50	19.0	0.0
44	51	20.7	0.0
43	52	20.7	0.0
42	53	10.0	0.0
41	54	7.7	0.0
40	55	9.2	0.0
39	56	10.7	0.0
38	57	20.1	0.0
37	58	18.5	0.0
36	59	8.8	0.0
35	60	11.3	0.0
34	61	8.0	0.0
33	62	17.3	0.0
32	63	8.4	0.0
31	64	16.2	0.0
30	65	18.8	0.0
29	66	11.2	0.0
28	67	11.0	0.0
27	68	14.4	0.0
26	69	15.4	0.0
25	70	15.1	0.0
24	71	12.2	0.0
23	72	10.4	0.0
22	73	13.9	0.0
21	74	16.8	0.0
20	75	16.8	0.0
19	76	11.8	0.0
18	77	5.8	0.0
17	78	18.2	0.0
16	79	17.9	0.0
15	80	8.2	0.0
14	81	18.2	0.0
13	82	18.2	0.0
12	83	24.0	0.0
11	84	21.8	0.0
10	85	20.8	0.0
9	86	21.8	0.0
8	87	16.8	0.0
7	88	11.8	0.0
6	89	9.2	0.0
5	90	8.0	0.0
4	91	12.1	0.0
3	92	10.3	0.0
2	93	18.0	0.0
1	94	10.8	0.0
	95	20.8	0.0



DW AT LEE FERRY

1

(5)	(6)	(7)
Average Since 1998	Progressive 10-year Moving Average	Virgin Flow Minus 100-year Average
10.1	0.0	-8.8
14.1	0.0	3.1
14.0	0.0	-1.1
14.3	0.0	1.0
14.2	0.0	-1.7
14.1	0.0	-1.3
13.4	0.0	-5.5
13.8	0.0	-0.1
13.8	0.0	0.7
14.0	14.0	1.1
14.5	14.9	4.2
15.2	15.5	0.5
15.1	15.4	-2.0
15.7	16.1	8.4
15.0	16.2	-0.7
15.0	15.5	1.1
15.9	17.8	5.9
15.8	17.9	-0.4
16.1	18.1	6.3
16.0	17.9	-0.9
16.1	17.9	4.3
16.5	18.0	9.1
16.4	18.2	0.5
16.3	17.2	-2.4
16.5	17.5	7.1
16.3	16.9	8.1
16.8	18.4	3.4
16.9	18.5	3.4
16.8	18.1	-0.7
16.9	18.0	-1.9
16.5	17.7	1.0
16.7	17.1	3.7
16.7	17.3	2.4
16.8	18.2	6.5
16.8	17.5	0.0
16.5	16.0	-7.1
16.6	15.9	2.3
16.4	15.2	-3.5
16.1	14.3	-9.3
16.0	14.2	-3.3
16.0	14.0	-1.1
16.9	13.5	-1.2
16.0	13.5	2.9
15.8	12.5	-3.8
15.7	11.8	-8.3
15.7	12.8	3.2
15.8	13.1	4.2
15.0	13.2	-1.8
15.7	14.2	0.3
15.7	14.4	-1.5
15.6	14.0	-4.5
15.8	14.2	0.6
15.8	14.3	0.7

Table 2  
ESTIMATED VIRGIN FLOW AT LEE FERRY  
(million acre-feet)

(1)	(2)	(3)	(4)	(5)	(6)	(7)
Years to 1995	Year Ending Sept 30	Estimated Virgin Flow	Average to 1995	Average Since 1998	Progressive 10-year Moving Average	Virgin Flow Minus 100-year Average
47	49	16.4	14.7	13.8	15.2	1.5
48	1950	12.9	14.1	15.8	14.6	-2.0
45	51	11.5	14.1	15.5	13.6	-3.3
44	52	20.7	14.2	15.6	14.6	5.8
43	53	10.6	14.0	16.8	14.1	-4.3
42	54	7.7	14.1	15.4	13.5	-7.2
41	55	9.2	14.2	15.3	13.4	-5.7
40	56	10.7	14.4	15.2	12.8	-4.2
39	57	20.1	14.5	16.3	13.9	5.2
38	58	16.8	14.3	15.0	13.6	1.5
37	59	8.5	14.2	15.3	12.9	-6.3
36	1960	11.3	14.4	15.1	12.7	-3.6
35	61	8.5	14.8	15.0	12.4	-5.4
34	62	17.3	14.7	15.0	12.1	2.4
33	63	8.4	14.6	15.0	11.8	-8.5
32	64	10.2	14.8	14.9	12.1	-4.7
31	65	18.8	14.9	14.9	13.1	6.0
30	66	11.2	14.8	14.9	13.1	-3.7
29	67	11.9	14.9	14.8	12.3	-3.0
28	68	13.7	15.0	14.8	12.0	-1.2
27	69	14.4	15.1	14.8	12.8	-0.5
26	1970	15.4	15.1	14.8	13.0	0.5
25	71	15.1	15.1	14.8	13.7	0.2
24	72	12.2	15.1	14.8	13.1	-2.7
23	73	16.4	15.2	14.9	14.2	4.5
22	74	13.3	15.0	14.8	14.0	-1.0
21	75	16.6	15.1	14.9	14.3	1.7
20	76	11.6	15.0	14.8	14.4	-3.3
19	77	5.8	15.2	14.7	13.6	-8.1
18	78	15.2	15.7	14.7	13.8	0.3
17	79	17.8	15.8	14.8	14.3	3.0
16	1980	17.5	16.0	14.8	14.5	2.0
15	81	8.2	15.5	14.7	13.6	-6.7
14	82	19.2	16.0	14.7	14.2	1.3
13	83	24.0	16.0	14.8	14.8	0.1
12	84	24.5	15.4	14.9	15.8	9.6
11	85	20.8	14.5	15.0	16.2	5.9
10	86	21.9	13.8	15.1	17.2	7.0
9	87	18.0	13.0	15.1	16.3	2.0
8	88	11.6	12.5	15.1	15.0	-3.3
7	89	9.2	12.7	15.0	17.1	-5.7
6	1990	8.0	13.3	14.9	16.1	-6.9
5	91	12.1	14.3	14.9	16.5	-2.8
4	92	10.3	14.8	14.9	15.8	-4.6
3	93	10.0	16.4	14.9	16.3	3.1
2	94	10.3	15.9	14.8	16.9	5.9
1	95	20.8	20.8	14.9	13.9	
						9.8
Maximum		24.5			19.5	-9.3
Minimum		5.8			11.8	0.0



